

RESIDENTIAL BUILDING

ENERGY EFFICIENCY

ENERGY AUDIT

AREA

All functional rooms of inside the building and surroundings

FOCUS

Application of artificial lighting/ Cooling systems/ Heating systems

EFFICIENT MEASURES TO IMPLEMENTATION

Water – Installation of Water tanks and recirculation pumps to restroom area 1 and area 2

Organic waste of community kitchen – Installation of worm farm composting

Reflective paint helps to reduce the heat absorption through the zincalume roofing

APPROPRIATE ENERGY EFFICIENT PRODUCTS IN IMPLEMENTATION - SOLAR PV OR LED OR BOTH

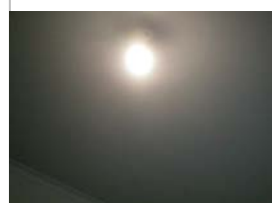
SUNSHINE 1 - VIC



LALOR - VIC



GLENROY 1 - VIC



GLENROY 2 - VIC

Update soon

SALISBURY - SA



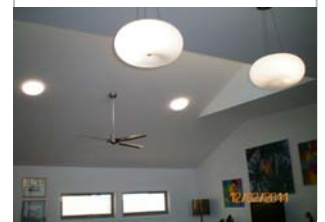
NORTH ADELAIDE - SA



SOUTH ADELAIDE - SA

No image

NORTHCOTE - VIC



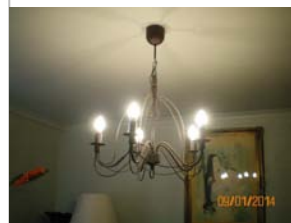
COLLINGWOOD



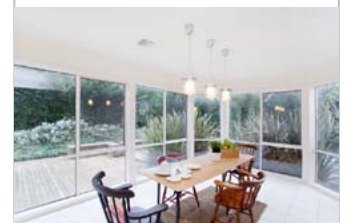
CAIRNLEA - VIC



ARMADALE - VIC



NARRE WARREN - VIC



SEAHOLME - VIC

Update soon

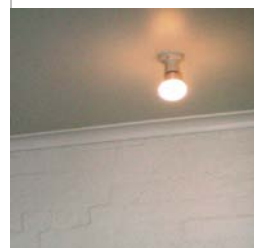
SUNSHINE 2 - VIC

Update soon

SEDDON - VIC

Project is under construction

CAROLINE SPRINGS



CARRUM DOWN



LOCATION
Reservoir – Vic
Glenroy – Vic
Gladstone Park - Vic
Flemington – Vic
St Kilda – Vic
Elwood - Vic
Port Melbourne - Vic
California - USA

Contact us for details on how to reduce your energy expense to your homes and business

ES Consulting services - ABN 11 405 462 023
Website: www.escservices.com.au
E: info@escservices.com.au
Mobile: +61 411 051 041
+61 432 123 772